

Fit cable assemblies quickly in bunches, large size



Series TE26 | Loops to be opened along the outer radius

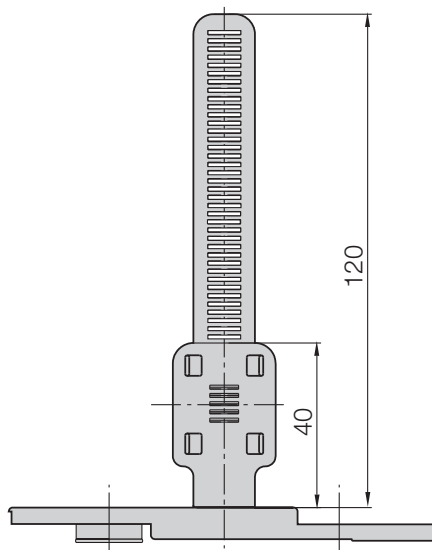
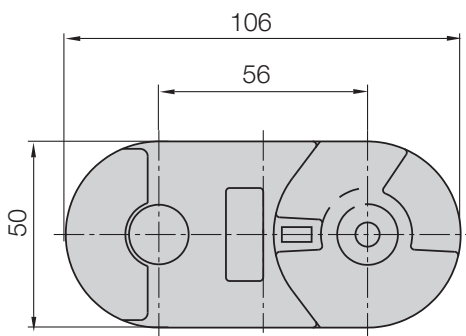
Series TZ26 | Loops to be opened along the inner radius

To be opened along the outer radius	To be opened along the inner radius	<i>R</i> Bending radii [mm]	Weight [kg/m]
TE26.120. <i>R</i> .0*	TZ26.120. <i>R</i> .0	063 075 100 125 150 200	≈ 0,43

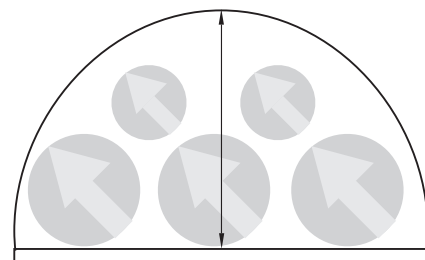
*also available as RBR (Reverse bending radius) Part No. TE26.120.Radius/Radius

Supplement Part No. with required radius (*R*). Example: TE26.120.100.0

Dimensions



Pitch 56 mm/link
Links/m 18 (1008 mm)
Chain length $s/2 + K$



Cable package max.: 47 mm